



MINDEN CHAMBER OF COMMERCE

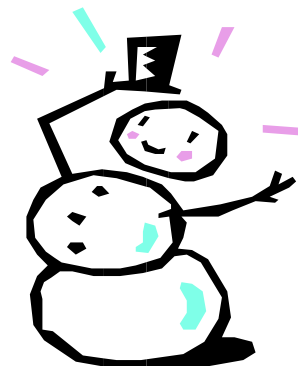
December Newsletter

Welcome New Board of Directors

First I would like to say **Thank you** to Jeff Ensz, Brooke Lundeen, Don Phillips and Riley Space for serving on the Chamber Board of Directors. For your expertise and service to the Minden Chamber of Commerce. You are assets to this community and your support has been greatly appreciated.

Welcome to our four new members of the Board of Directors. I look forward to working with you.

Marcy Brandt
Sally Jurgensmier
Jordan Patterson
Don Phillips



Board of Directors

President
Deb Granger
Anderson Jewelry

Vice President
Angle Finn
First Bank & Trust

Secretary
Rhonda Ellis
Big John's Ford

Jeff Ensz
Lieske Law Firm

Amy Fuqua
Big John's Ford

Merry Hinrichsen
Minden Exchange
Bank & Trust Co.

Andy Knott
Landmark

Kevin Krull
Krull Agency

Brooke Lundeen
Minden Exchange Bank

Don Phillips
Joy's Floral

Riley Space
Mason's Market

Dawn Thompson
Rhynalds Auction & Realty,
LLC

Jackie Webster
Jensen Memorial Library

Administrator:
Marcia Davis

308-832-1811
mindenchamber@gtmc.net
www.mindenNE.org

Christmas City 5K Fun Run & Little Elves 1 Mile Run

Saturday, December 7th
Westminster United Presbyterian Church
1 mile at 8:30am—5K run 9:00am

Free will pancake & sausage breakfast will be served by the Minden Rotary Club

\$20.00 registration fee
\$25.00 race day registration

Call Chamber Office, 832-1811
or download the registration form at
mindenne.org



Christmas Tour of Homes

Sunday, Dec. 8
1:00-3:00pm
\$10.00

*Half of the proceeds will be
donated to the Food Bank.*

Advance Tickets available
at the Minden Chamber Office.

Tickets can be purchased at the
Minden Opera House
on the day of the event.
(12-3:00pm)

For more information contact
the Minden Chamber Office,
308-832-1811.



PANCAKE FEED

Saturday, December 7th
Westminster Presbyterian Church
8:00am - noon

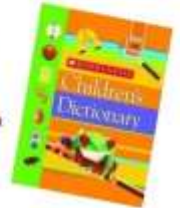
Before & after the Christmas City 5K Fun Run

Special thanks to:
Phillips Mowing
Kearney County
Health Services
Cargill
Ren Boewer

Proceeds will go to fund Minden Rotary Club's local
service project, "Dictionary for 3rd Graders!"

*Every 3rd grade child in Kearney County will receive a
free picture dictionary.*

That is 101 dictionaries!!



Cookie Walk

St. Paul Lutheran Church
Sunday, Dec. 8

11:30am-2:00pm

Proceeds to support
"Be a Gift" program

**Sponsored by St. Paul's
Lutheran Sunday School**



*Skyles the Limit Hair & Nail Salon
Ribbon cutting & Open House
Nov. 8*

Welcome to the Minden Chamber Skye Beckman



Dec. 7

Heartwell Lions Club

Pancake feed

5:00-7:00 pm

Heartwell Community Hall.

*The Heartwell Lions Club
thanks you for all your support!*



*Christmas Gift
Idea?????*



How about Minden Chamber Bucks they make great stocking stuffers, last minute gifts or Employee gifts. Chamber bucks are available for purchase at the Chamber Office, 325 N. Colorado or

Minden Community Players present
A Christmas Revue IV
 Sunday, Dec. 8, 4:00pm
 Minden Opera House
 Adults \$7.50 Students \$5.00



Need a Santa Suit? The Chamber has a Santa Suit for rent. Suit includes coat, pants, shoe flips, belt and hat. Beards are also available for purchase. For more information call 832-1811

Your Holiday Destination

EST. 1891 MOH

November 29 & December 8
 7:30 pm 4:00 pm
 Adults \$7.50
 Children \$5.00 Ages 13 & under

CHRISTMAS REVUE

Joseph Hill as ELVIS
 December 15
 2:30 pm
 Tickets \$20

December 21
 7:30 pm
 Tickets \$16

NEBRASKA BRASS

December 22
 6:00 pm
 Adults \$5.00
 Children \$.25
 4th grade & under
 Advance tickets REQUIRED

Minden Opera House
 308.832.0588
 MindenOperahouse.com

NEBRASKA ARTS COUNCIL

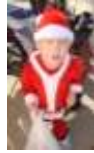
Light of the World Pageant
 7:00pm
 On the square
 Dec. 1
 Dec. 8
 Bring your Family, Friends & blanket/chairs and enjoy the last two performances of the 2013 season.



Halloween Parade, 2013



Thank you to Paula and Marcy for leading the parade again this year. It was another great day for the parade and it was a long one too.



Minden Optimist Club Youth Basketball Tournament January 25-26 5th –8th Grade **Boys' & Girls' teams**

For more information contact
Becky Rehtus, 832-1273 or
830-0164 or trehtus@gtmc.net

Burchell's White Hill Farmhouse Inn

Winter Hours
starting Dec. 23, 2013

We opened our restaurant during November 2007. It has been an awesome six years.

We have appreciated the wonderful community support. Thank you.

To meet the growing demand for special event activities and bed and breakfast lodging, we will end public dining hours starting December 23, 2013. We will continue to hosting public events as well as private parties such as harvest meals, weddings, anniversaries, reunions, meetings, retreats, and family gathering. Please contact us to plan your private party.

Make reservation for our up-coming special events:

Christmas Tea and Farmhouse Tour

2:00-4:00 pm

December 4, 2014

Cost: \$10.00 plus tax and tip

Groups of eight or more are discounted



Christmas Luncheon

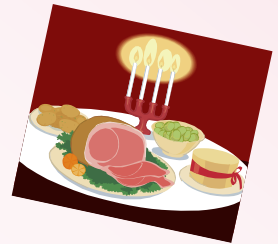
Ham Luncheon with Speaker

12:00 am -1:30 pm

December 20, 2014

Cost: \$12.00 plus tax and tip

Groups of eight or more are discounted



If you have a gift certificate and wish to use it for public dining, you may plan to use it before December 23, 2013. Burchell's White Hill Farmhouse Inn Gift Certificates do not expire, please contact us to discuss various options for redeeming the certificates.

Contact us at 308-832-1323, e-mail blard@gtmc.net, or message on facebook at Burchell's White Hill Farmhouse Inn.
Located at 1578 30th Road Minden, NE 68959

Calendar of Events

- Dec. 1 Light of the World Christmas Pageant, 7:00pm, on the Square
- Dec. 4 Christmas Tea and Farmhouse Tour, 2:00-4:00pm
Burchell's White Hill Farmhouse Inn, Reservations required, call 308-832-1323
- Dec. 7 Rotary Pancake Feed, Westminster United Presbyterian Church, 8:00am-12:00pm
- Dec. 7 Christmas City 5K & Little Elf Run, Westminster United Presbyterian Church
8:30am Little Elf Run & 9:00am 5K Run/Walk
- Dec. 8 Heartwell Lions Pancake Feed, 5:00-7:00pm, Heartwell Community Hall
- Dec. 8 Cookie Walk, 11:30am-2:00pm, St. Paul Lutheran Church
- Dec. 8 Christmas Tour of Homes, 1:00-3:00pm
- Dec. 8 A Christmas Revue IV, Minden Opera House, 4:00pm
- Dec. 8 Light of the World Christmas Pageant, 7:00pm, on the Square
- Dec. 15 Joseph Hall as Elvis, Minden Opera House, 2:30pm
- Dec. 20 Christmas Luncheon, 12:00-1:30pm
Burchell's White Hill Farmhouse Inn
Reservations required, call 308-832-1323
- Dec. 21 Nebraska Brass, Minden Opera House, 7:30pm
- Dec. 22 Polar Express Storytelling & Movie,
Minden Opera House, 6:00pm
- Dec. 25 Merry Christmas
- Dec. 31 New Year's Eve**



Bethany Home Invites You to

*Dec. 2 Memory Tree, Decorating &
Angel ornaments, 2:00pm*

Dec. 8 Annual Christmas Tree Walk, 2:00pm

Dec. 24 Christmas Candlelight Service, 2:00pm

Dec. 31 New Year's Party, 2:00pm

2013 PREMIUM Partners

Platinum



Gold



Kearney CO
Health Services



Silver



Bronze

- | | |
|------------------------|--------------------|
| Anderson Jewelry | Krull Agency |
| Aurora Cooperative | Minden Opera House |
| Chandler Well Service | Pioneer Aerial |
| C-Tech Restoration | Royal Engineering |
| 5th Street IGA | Stadler Implement |
| KRVN AM/FM Radio | Subway |
| First Bank & Trust CO. | Tri County Glass |

**3rd Annual
Minden Chamber of Commerce
Christmas City 5K
Fun Run/Walk
1 mile run Little Elf Run**

Saturday, December 7, 2013

**8:30am Little Elf run
9:00am 5K Fun Run/Walk**

\$20.00 5K/\$15.00 Little Elf run

Register by Nov. 22 to guarantee a race shirt

Day of the race entry fee \$25.00

*Make checks to Minden Chamber
mail to Minden Chamber, PO box 375, Minden, NE 68959*

Registration & Start/Finish

Westminster United Presbyterian Church

From Interstate 80: Drive south on Hwy 10 to Minden. Keep going south past the stop lights to Brown Ave. & 1st Street. Turn Left, travel 2 blocks to Colorado Ave, turn Left. The Church is on the NW corner of 1st & Colorado Ave with parking on SW corner.

Age Groups:

15 & under, 16-25, 26-35, 36 & over

Female & Male divisions in each age group

Event Information

Packet pick up, 8:30am the day of the race

Please arrive 30 minutes before your race time & check in.

The top three runners in each division will receive awards.

We encourage costumes, Prizes for the best!

Free Will Offering Pancake Feed sponsored by Minden Rotary following the race.

Questions 308-830-1811 or mindenchamber@gtmc.net

Christmas City 5K Fun Run/Little Elf 1 mile run

Name: _____

Address: _____ City, State, Zip _____

Email: _____ Phone: _____

Circle one: Male Female Age bracket _____

Race (circle one) 5K run 5K walk 1 mile Elf Run T-Shirt size: YS YM YL S M L XL

Legal Waiver

In consideration of accepting this entry, I hereby, for myself, my heirs and personal representatives, waive and release all rights and, claims for damages I may have against the Minden Chamber of Commerce and the Christmas City 5K race sponsors for any and all injuries and damages sustained by me at this event and I voluntarily assume the risks of participation.

Participant's signature _____

Date _____